

TURNBUCKLE BODY - OPEN, UNC THREAD

316 STAINLESS STEEL



Import



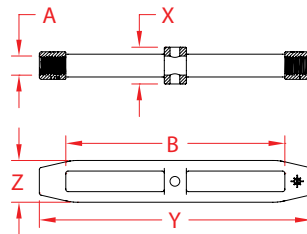
Precision
Cast



Precision
Machined



Suncor
Exclusive



ITEM	A (size)	B (adjustment)	WLL (lb)	X (height)	Y (length)	Z (width)	WT (lb)	PACKAGING TYPE	EACH (qty)	INNER (qty)	CARTON (qty)	UPC
P0105-BD05	3/16"	2.50"	300	0.26"	3.28"	0.44"	0.04	POLYBAG	1	100	1000	791506019824
P0105-BD07	1/4"	3.00"	440	0.36"	3.98"	0.61"	0.10	POLYBAG	1	50	500	791506019831
P0105-BD08	5/16"	4.00"	800	0.62"	5.10"	0.70"	0.15	POLYBAG	1	25	250	791506019848
P0105-BD10	3/8"	6.00"	1,200	0.71"	7.50"	0.85"	0.34	POLYBAG	1	10	120	791506019855
P0105-BD13	1/2"	6.00"	2,200	0.98"	7.41"	1.12"	0.61	POLYBAG	1	5	60	791506019879
P0105-BD16	5/8"	8.00"	2,800	1.18"	9.94"	1.34"	1.08	POLYBAG	1	1	30	791506019886
P0105-BD20	3/4"	10.00"	3,500	1.50"	12.10"	1.70"	1.90	POLYBAG	1	1	20	791506019893

NOTE:
MULTIPLE CONFIGURATIONS AVAILABLE FOR USE WITH THIS BODY.
ALL DIMENSIONS ARE NOMINAL (+/- 3%) AND ARE SUBJECT TO CHANGE WITHOUT NOTICE.